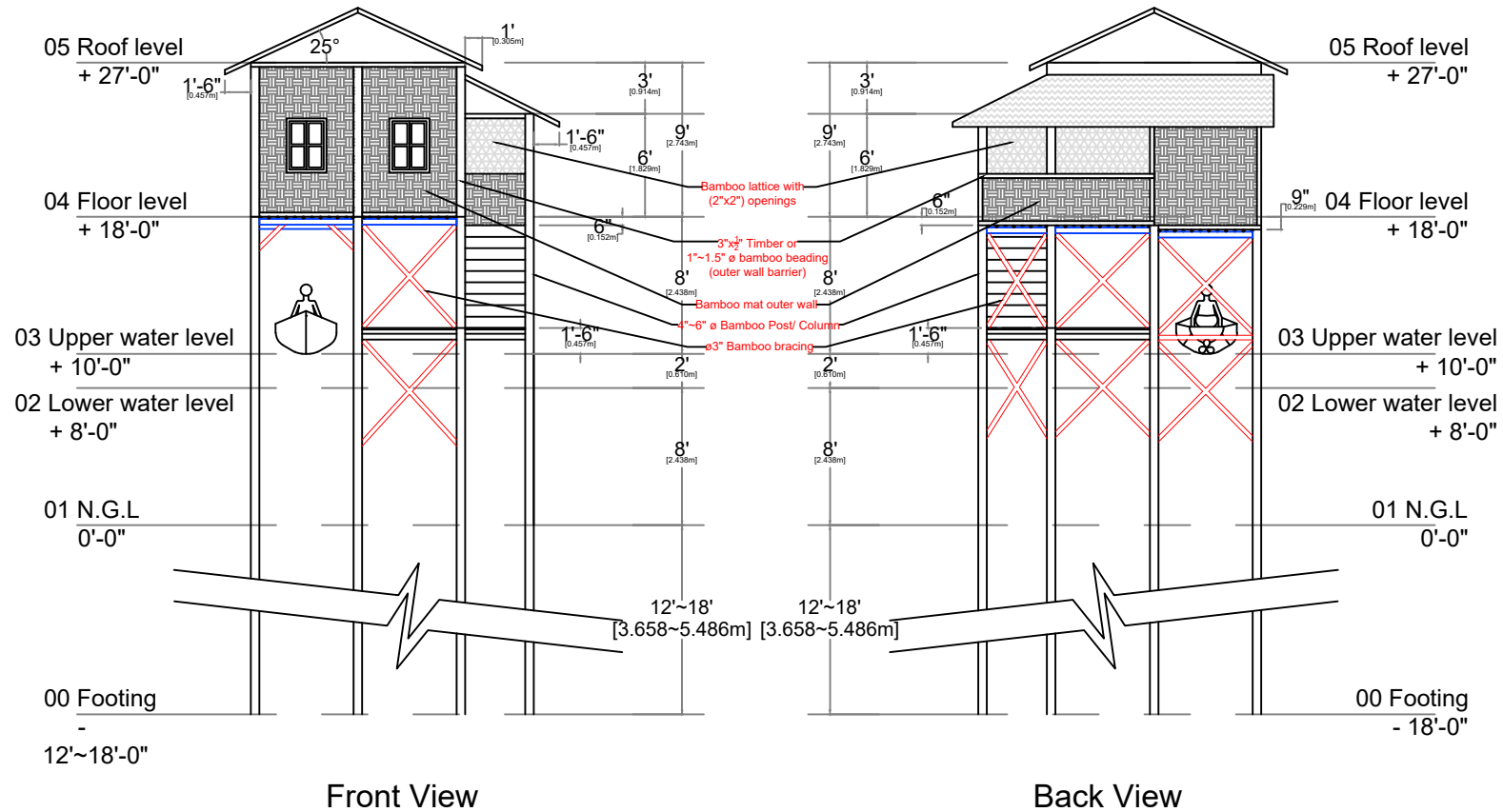


CGI Sheet Roof



NOTE:

Use cyclone straps for every connection between columns/posts, beams, chords, rafters.
Ensure proper connection with straps from foundation to roof elements.

Transitional Shelter Design_ Inle lake area

Dwg No. 1

Scale: 3/32" = 1'-0"

Date: 13-Aug-2025



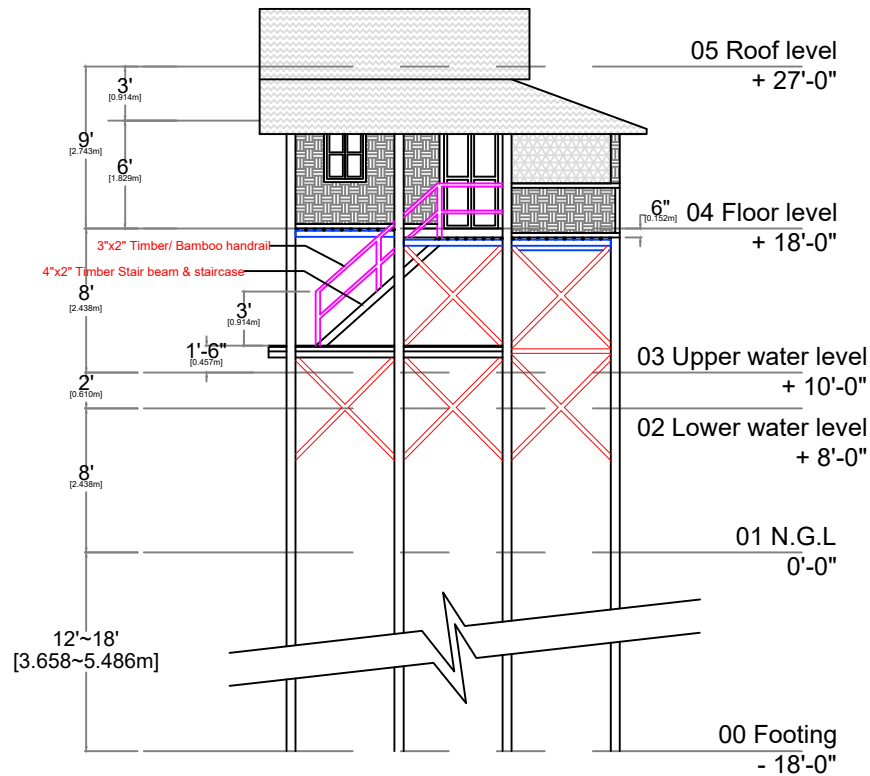
**MYANMAR
SHELTER CLUSTER**

Coordinating Humanitarian Shelter and Settlements

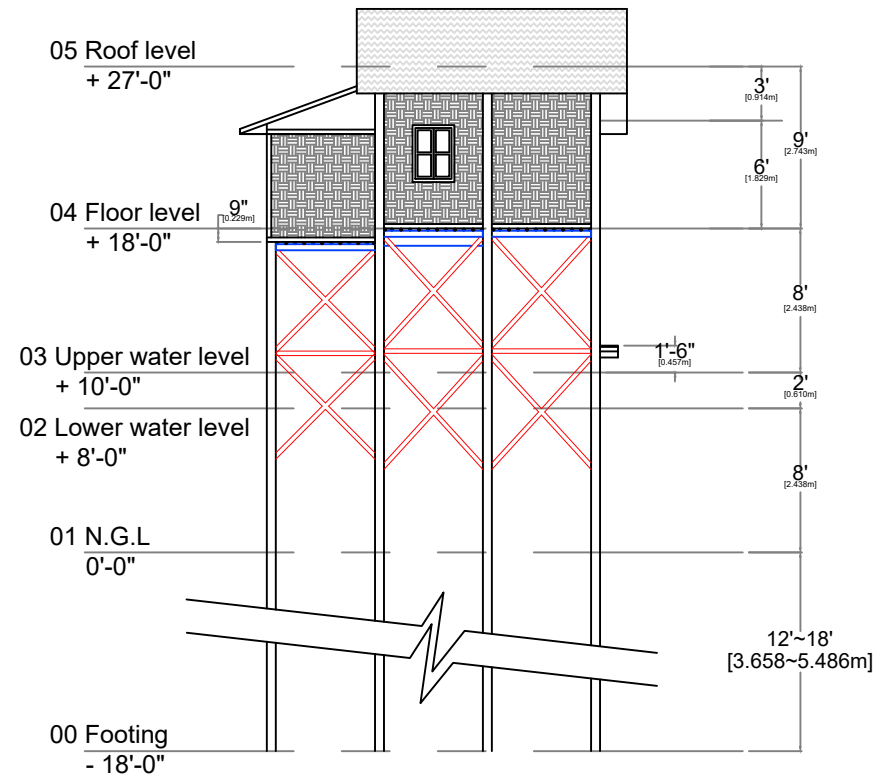


Myanmar

CGI Sheet Roof



Right Side View



Left Side View

NOTE:

Use cyclone straps for every connection between columns/posts, beams, chords, rafters.
Ensure proper connection with straps from foundation to roof elements.

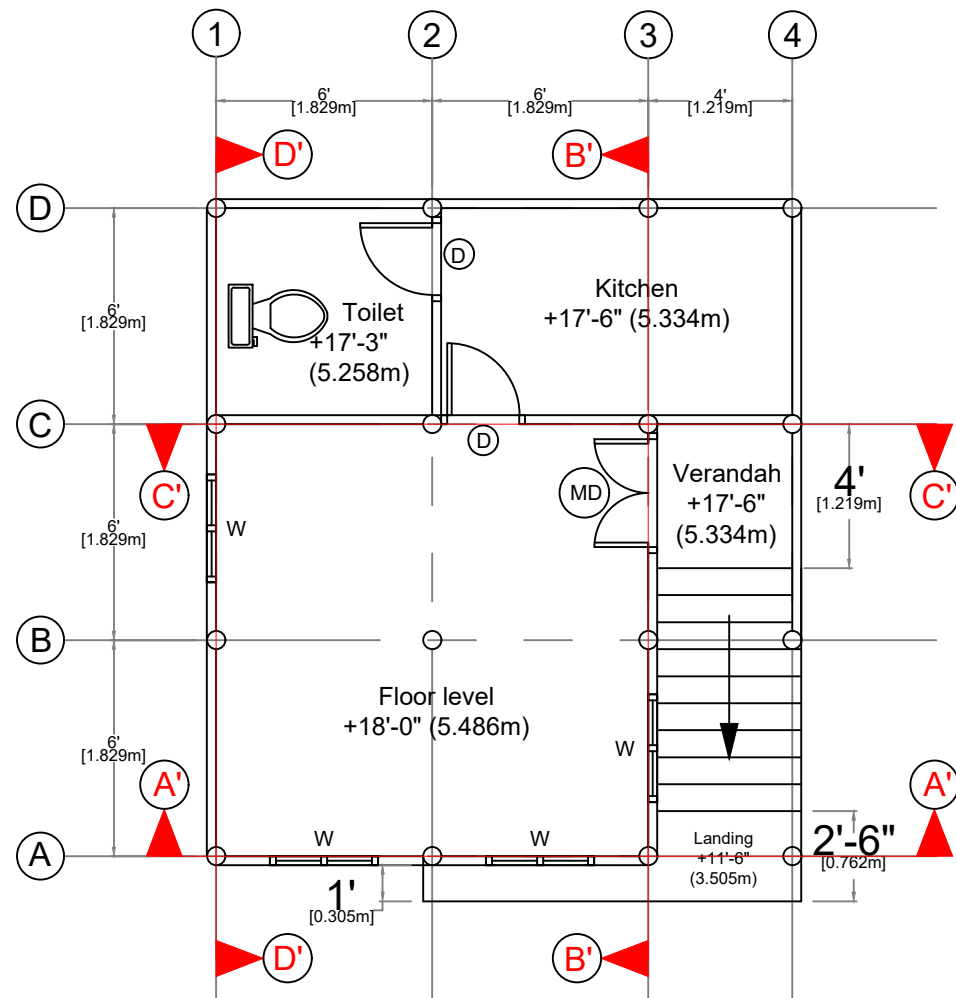
Transitional Shelter Design_ Inle lake area

Dwg No. 2

Scale: $\frac{3}{32}" = 1'-0"$

Date: 13-Aug-2025





Floor Plan
(+18'-0" ~ 5.486m)

Transitional Shelter Design_ Inle lake area

Dwg No. 3

Scale: $\frac{3}{16}" = 1'-0"$

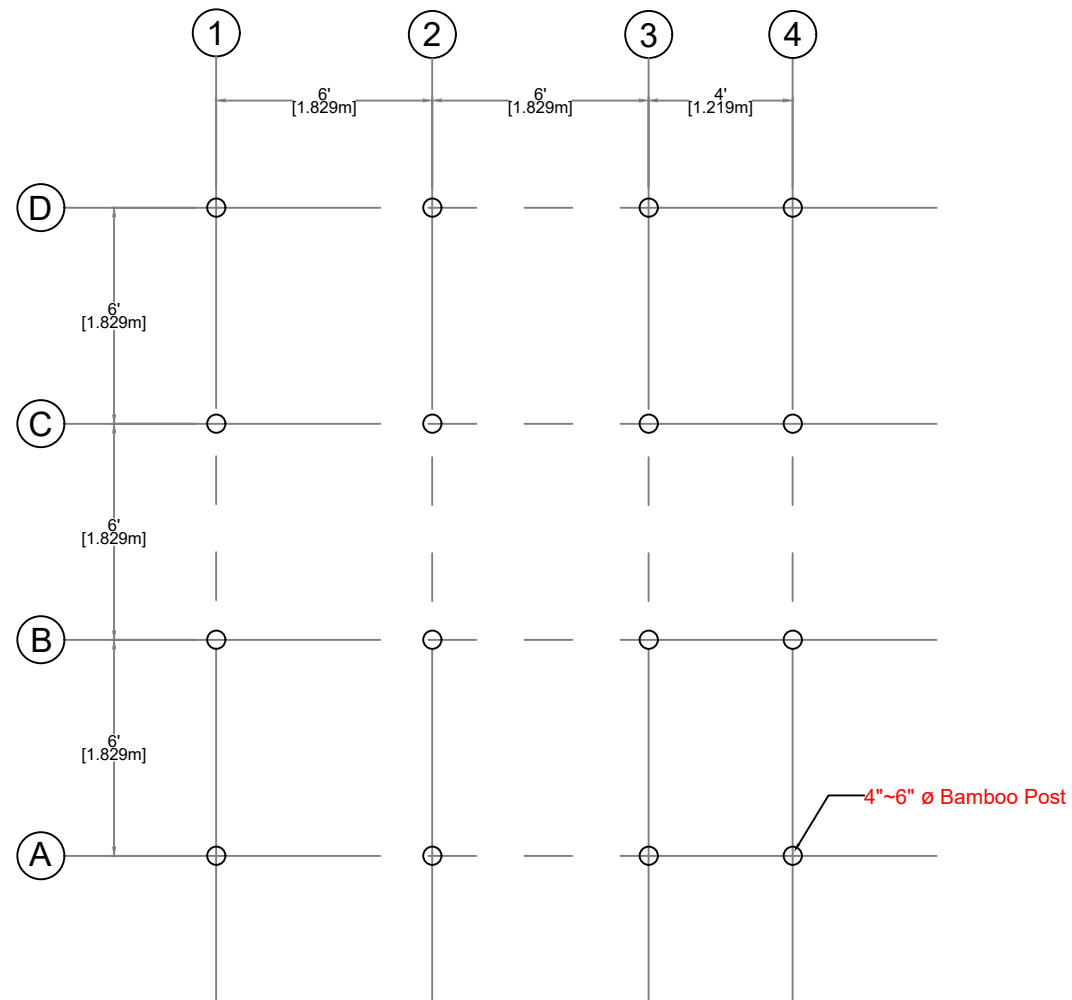
Date: 13-Aug-2025



MYANMAR
SHELTER CLUSTER
Coordinating Humanitarian Shelter and Settlements



CCCM CLUSTER
Myanmar



Column Plan

Transitional Shelter Design_ Inle lake area

Dwg No. 4

Scale: $\frac{3}{16}" = 1'-0"$

Date: 13-Aug-2025



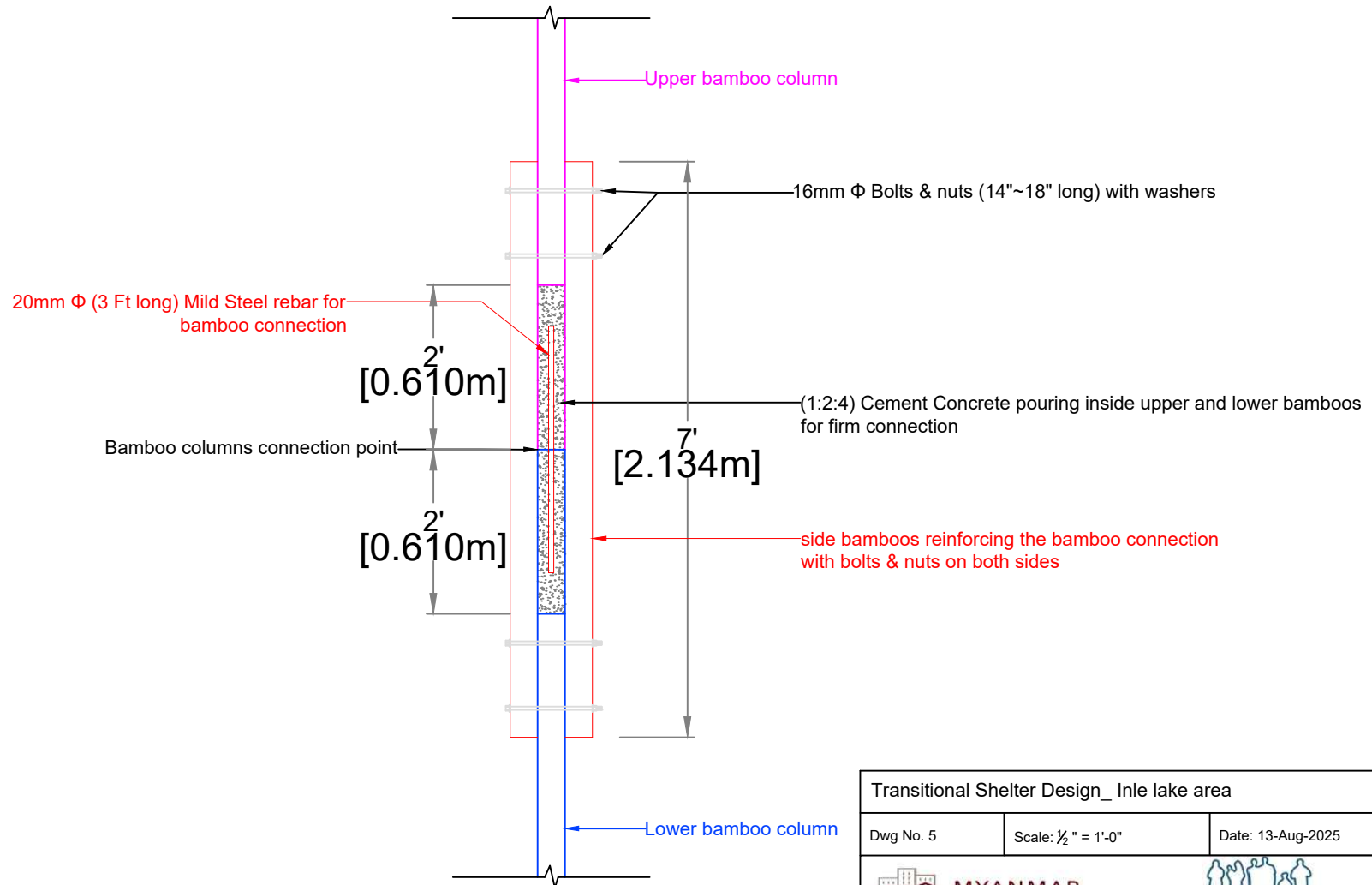
**MYANMAR
SHELTER CLUSTER**
Coordinating Humanitarian Shelter and Settlements





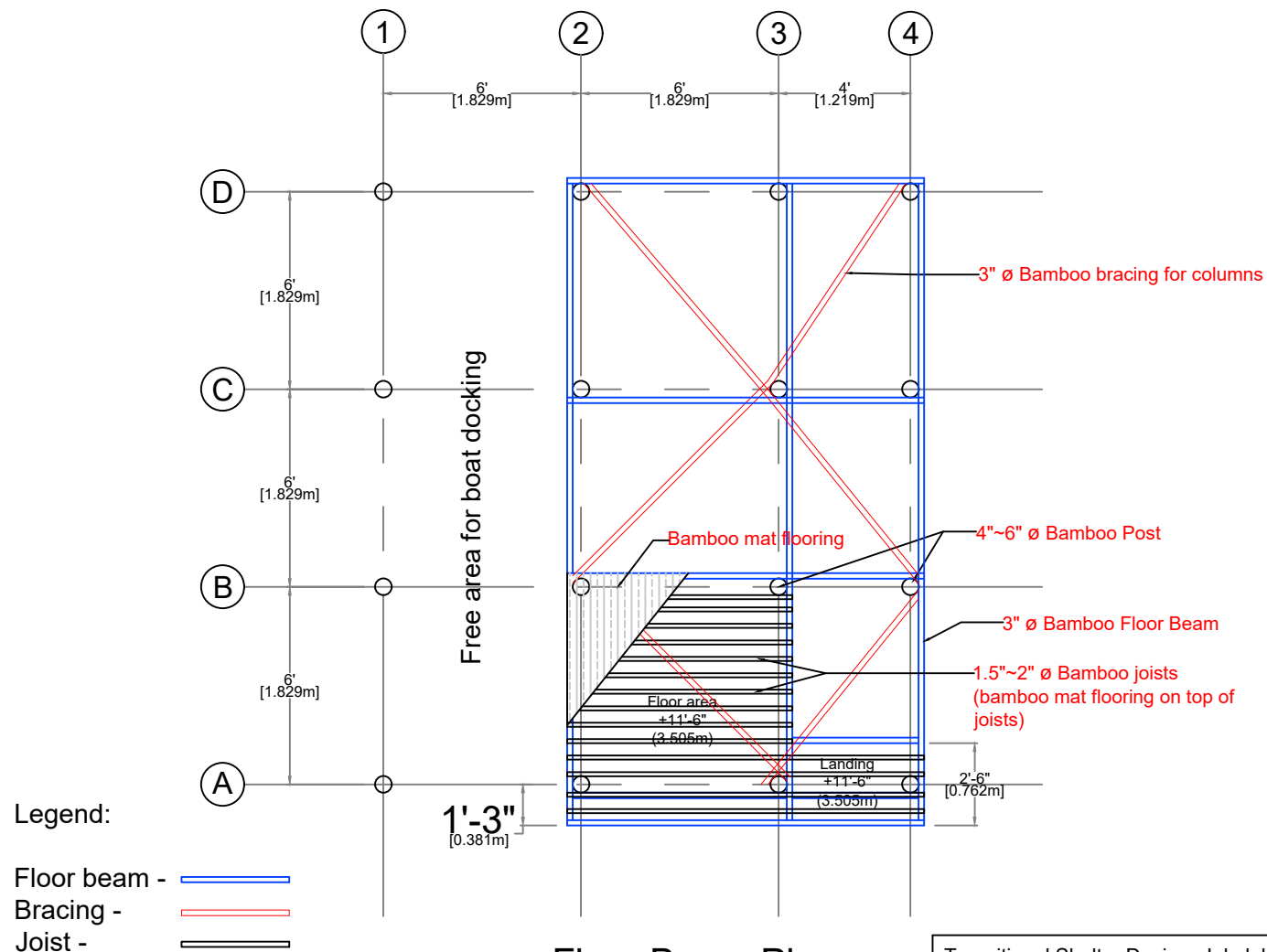
CCCM CLUSTER
Myanmar

Bamboo column connection details

(In case the bamboo column(s) need connection at some point!)



Transitional Shelter Design_ Inle lake area		
Dwg No. 5	Scale: $\frac{1}{2}$ " = 1'-0"	Date: 13-Aug-2025
 MYANMAR SHELTER CLUSTER Coordinating Humanitarian Shelter and Settlements		 CCCM CLUSTER Myanmar



Floor Beam Plan
(11'-6" ~ 3.505m)

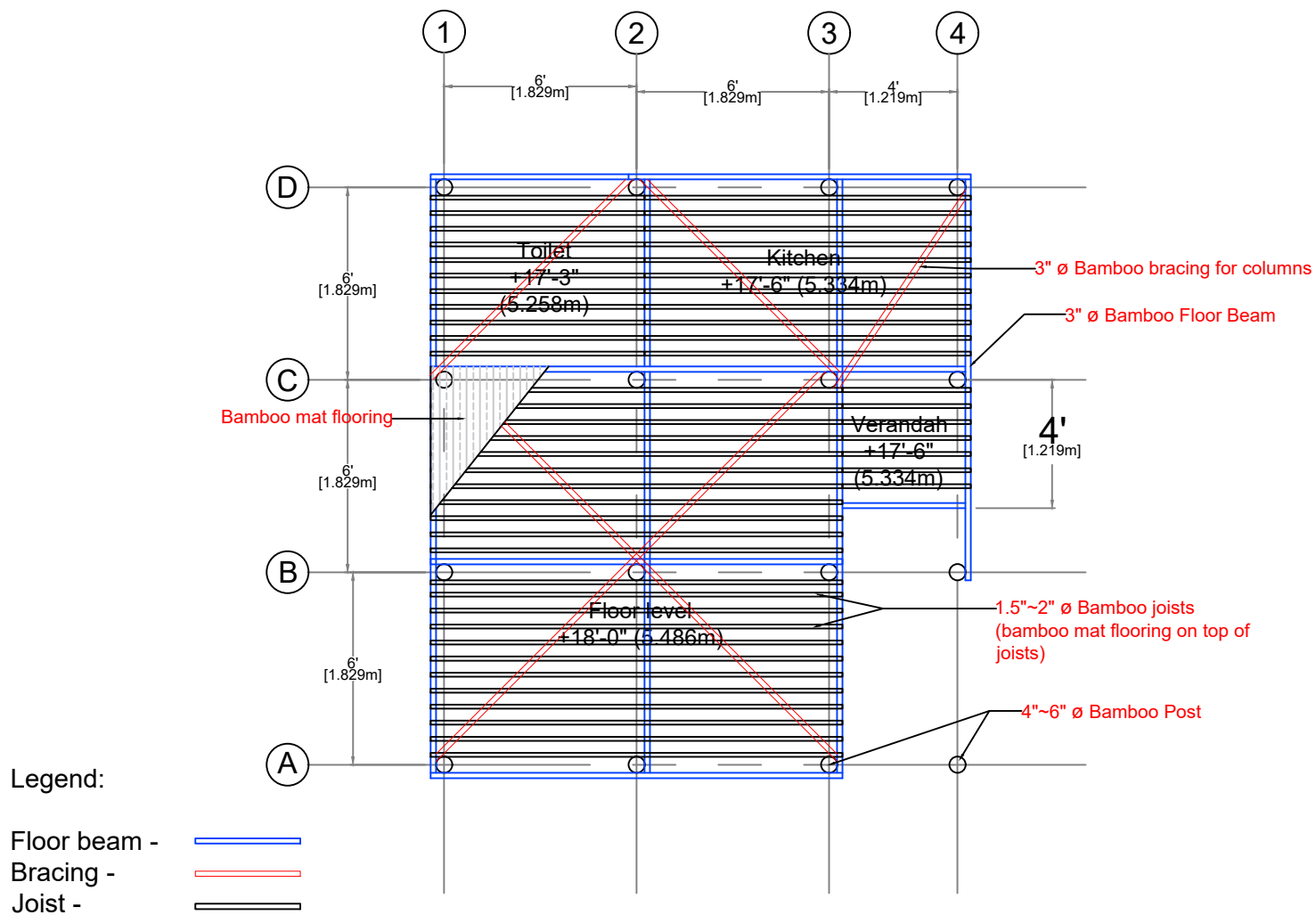
Transitional Shelter Design_ Inle lake area

Dwg No. 6

Scale: $\frac{3}{16}" = 1'-0"$

Date: 13-Aug-2025





Floor Beam Plan
(+18'-0" ~ 5.486m)

Transitional Shelter Design_ Inle lake area

Dwg No. 7

Scale: $\frac{3}{16}" = 1'-0"$

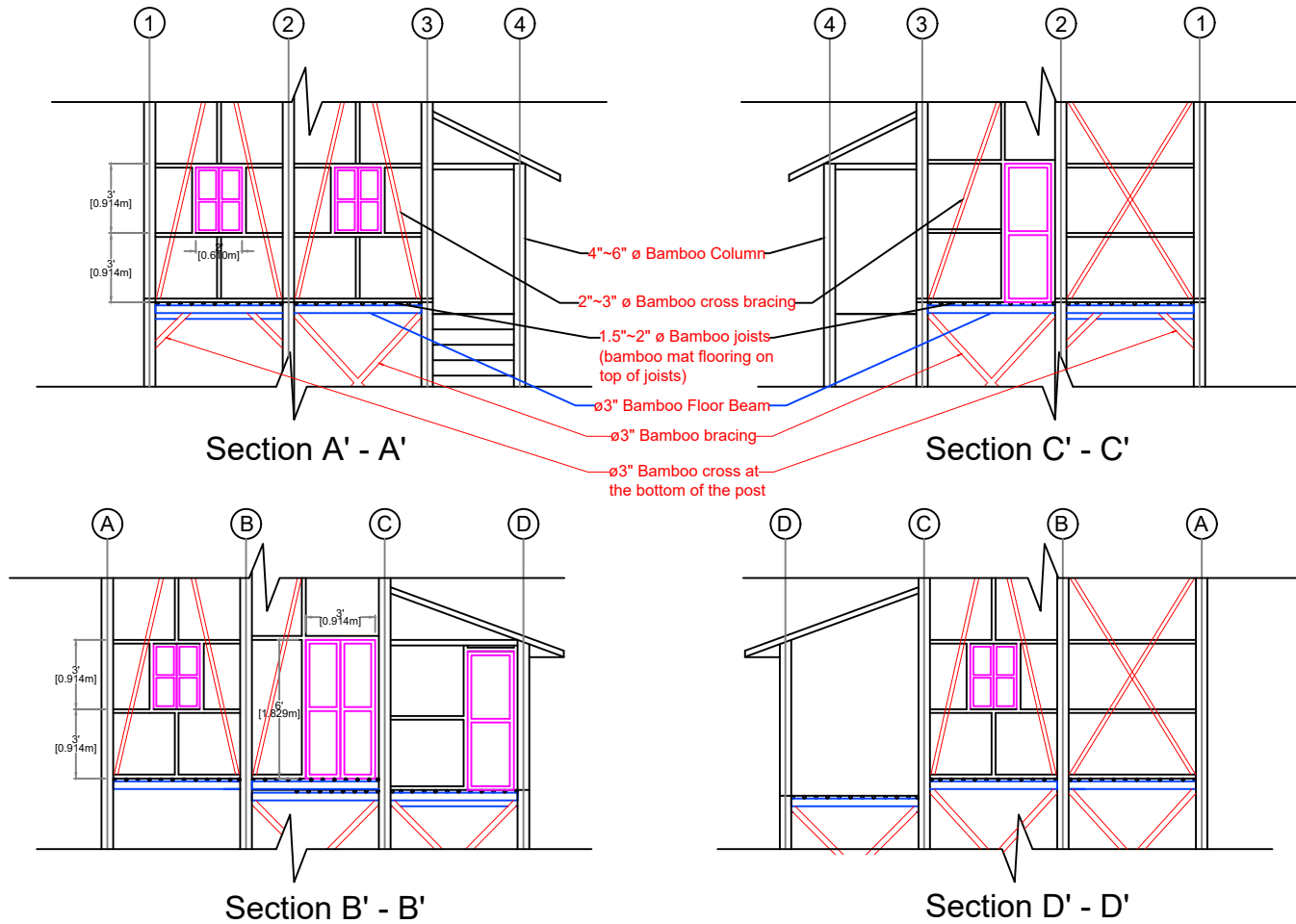
Date: 13-Aug-2025



MYANMAR
SHELTER CLUSTER
Coordinating Humanitarian Shelter and Settlements



Cross-Section for Main Wall Frames



NOTE:

1. The cluster does not recommend using Asbestos-Containing Materials (ACM) in any part of the shelter!
2. Door and window frames must be 3"x2" timber while other struts and bracing can be 2"~3" \varnothing bamboo.

Transitional Shelter Design_ Inle lake area

Dwg No. 8

Scale: $\frac{1}{8}" = 1'-0"$

Date: 13-Aug-2025

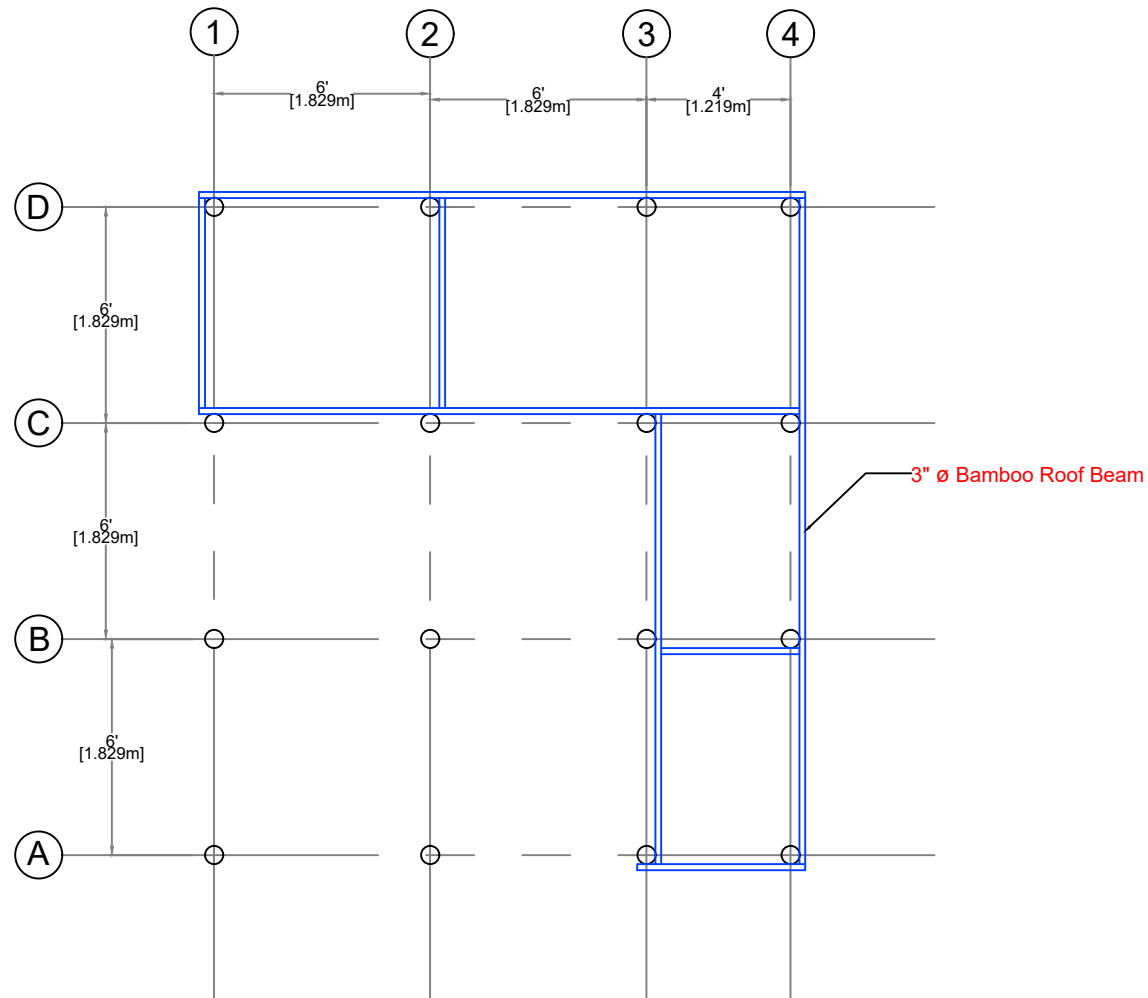


**MYANMAR
SHELTER CLUSTER**



Coordinating Humanitarian Shelter and Settlements

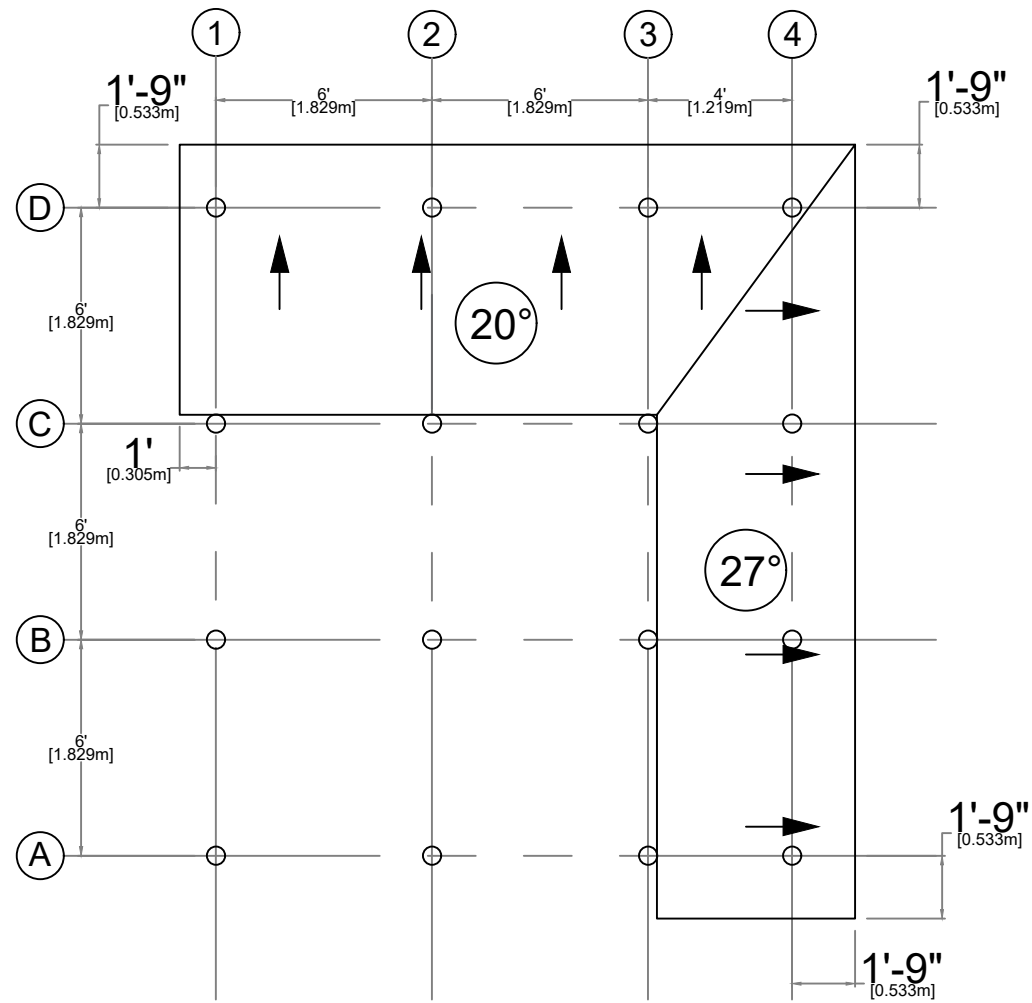


**CCCM CLUSTER
Myanmar**





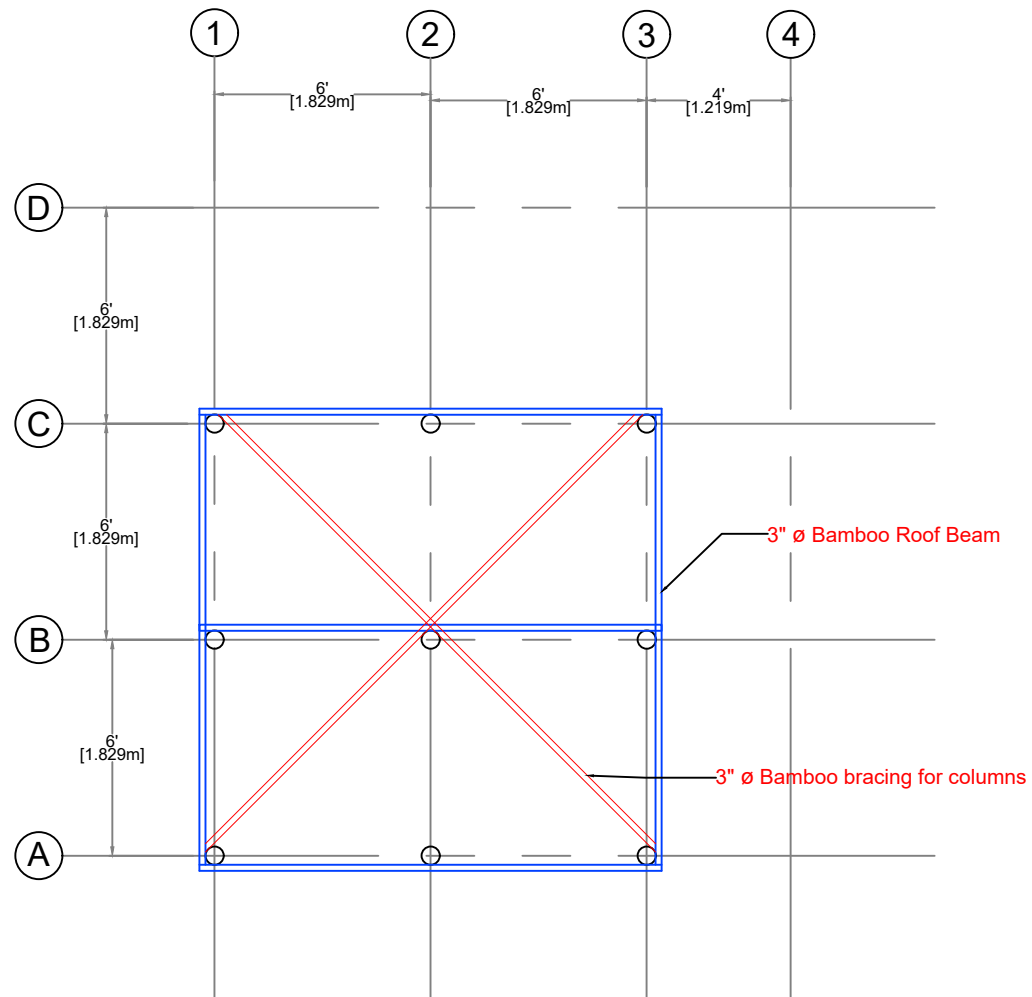
Roof Beam Plan
 (+24'-0" ~ 7.315m)

Transitional Shelter Design_ Inle lake area		
Dwg No. 9	Scale: $\frac{3}{16}" = 1'-0"$	Date: 13-Aug-2025
 MYANMAR SHELTER CLUSTER Coordinating Humanitarian Shelter and Settlements		 CCCM CLUSTER Myanmar



Roof Plan
(+24'-0" ~ 7.315m)

Transitional Shelter Design_ Inle lake area		
Dwg No. 10	Scale: $\frac{3}{16}" = 1'-0"$	Date: 13-Aug-2025
 MYANMAR SHELTER CLUSTER Coordinating Humanitarian Shelter and Settlements		 CCCM CLUSTER Myanmar



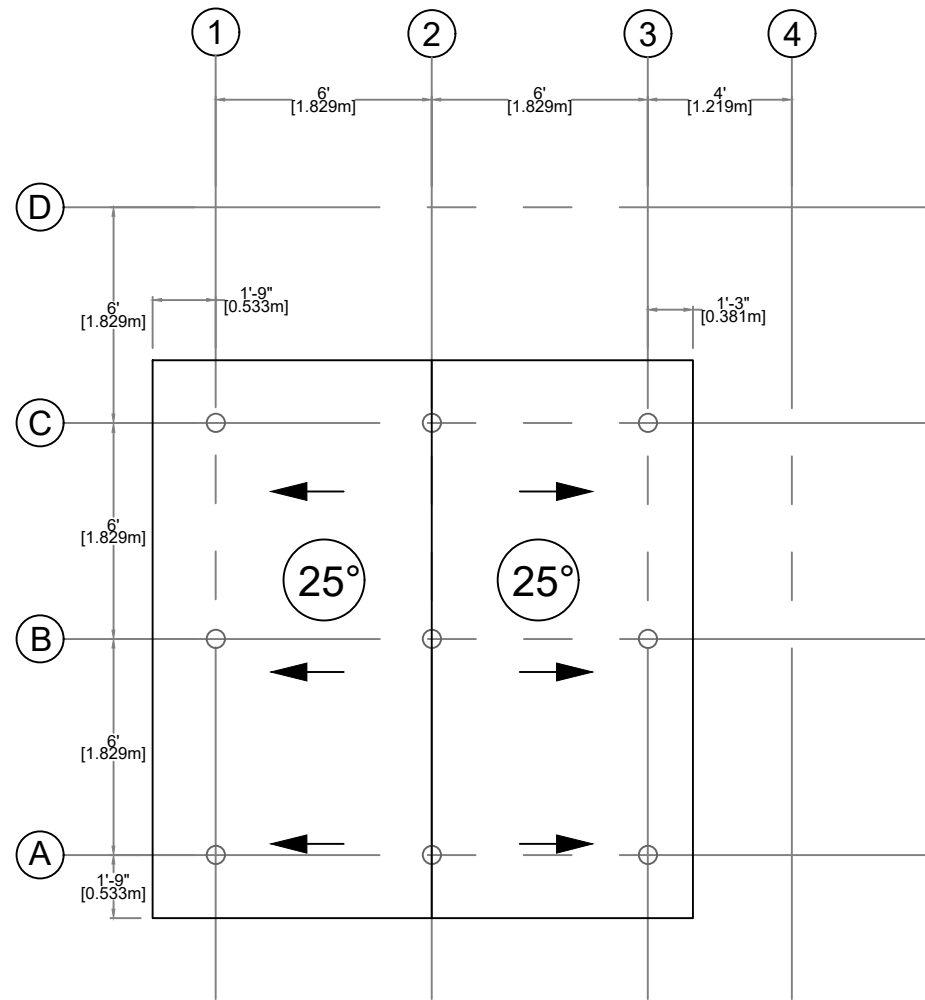
Transitional Shelter Design_ Inle lake area

Dwg No. 11

Scale: $\frac{3}{16}" = 1'-0"$

Date: 13-Aug-2025





Roof Plan (CGI Roof)
(+27'-0" ~ 8.230m)

Transitional Shelter Design_ Inle lake area

Dwg No. 12

Scale: $\frac{3}{16}" = 1'-0"$

Date: 13-Aug-2025

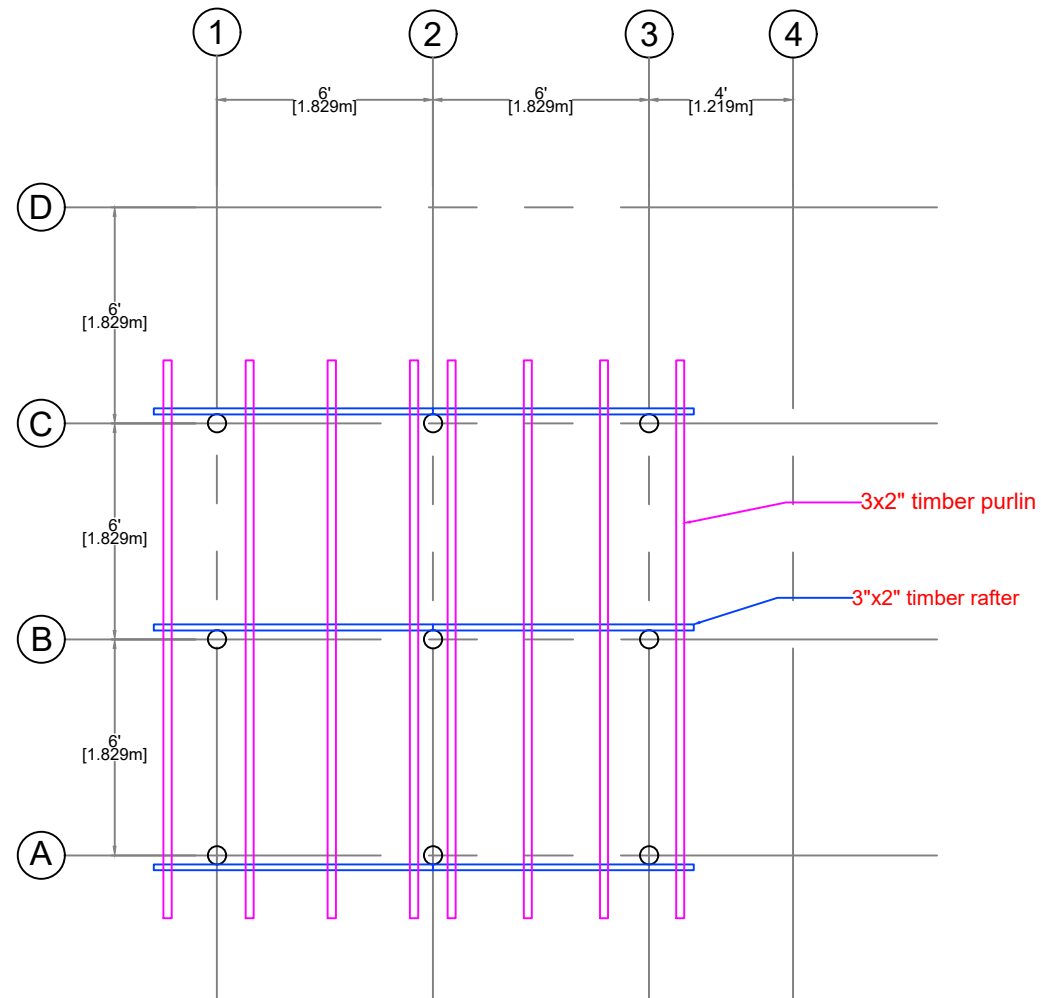


**MYANMAR
SHELTER CLUSTER**

Coordinating Humanitarian Shelter and Settlements



Myanmar



Rafter & Purlin Plan (CGI roof)
(+27'-0" ~ 8.230m)

Transitional Shelter Design_ Inle lake area

Dwg No. 13

Scale: $\frac{3}{16}" = 1'-0"$

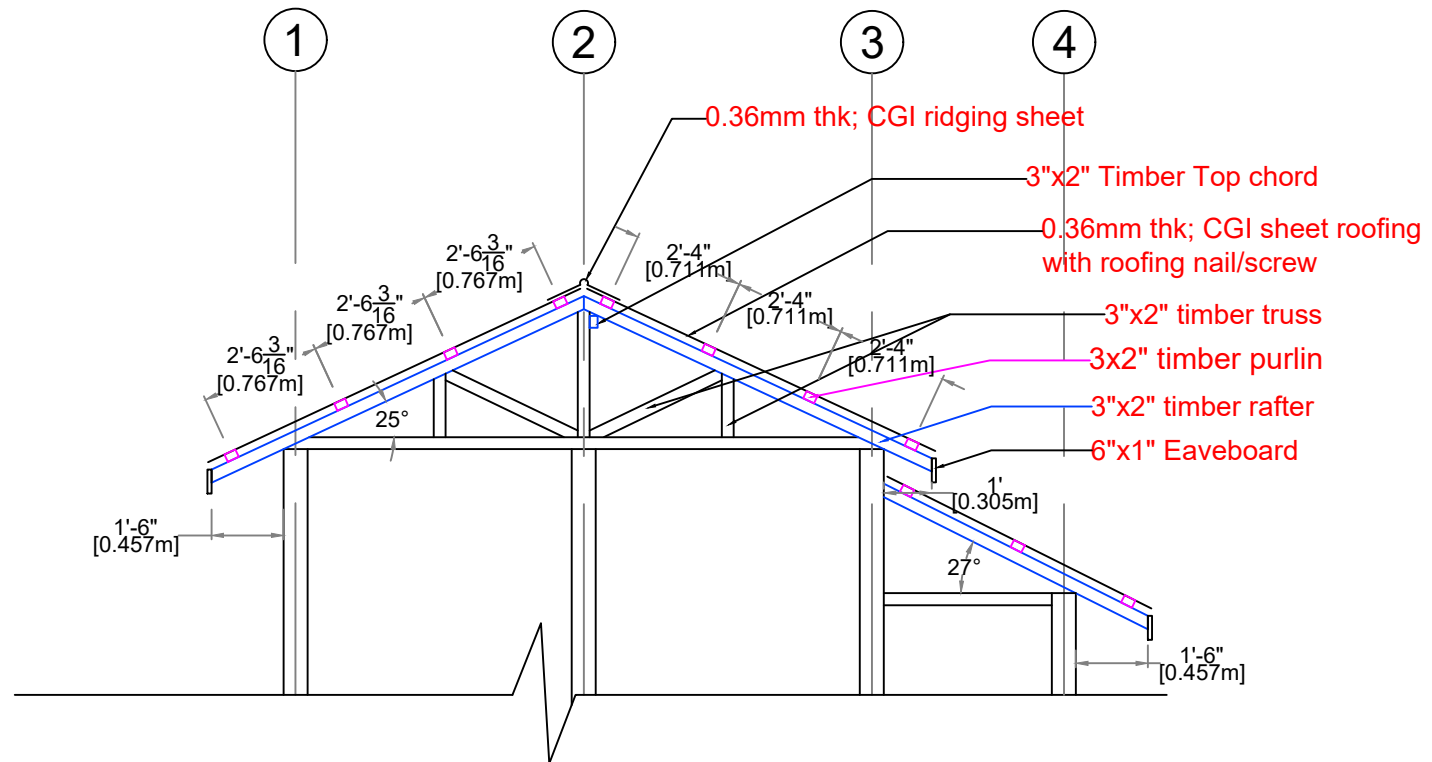
Date: 13-Aug-2025



**MYANMAR
SHELTER CLUSTER**
Coordinating Humanitarian Shelter and Settlements



CCCM CLUSTER
Myanmar



**Roof Truss Details
(CGI Roof)**

NOTE:

1. The cluster does not recommend using Asbestos-Containing Materials (ACM) in any part of the shelter!
2. It is highly recommended to provide ceiling when using CGI sheet for roofing.
3. If location is prone to cyclones and very strong wind, roof overhang shall be max; 1 ft ~ 30 cm length.

Transitional Shelter Design_ Inle lake area

Dwg No. 14

Scale: $\frac{1}{4}$ " = 1'-0"

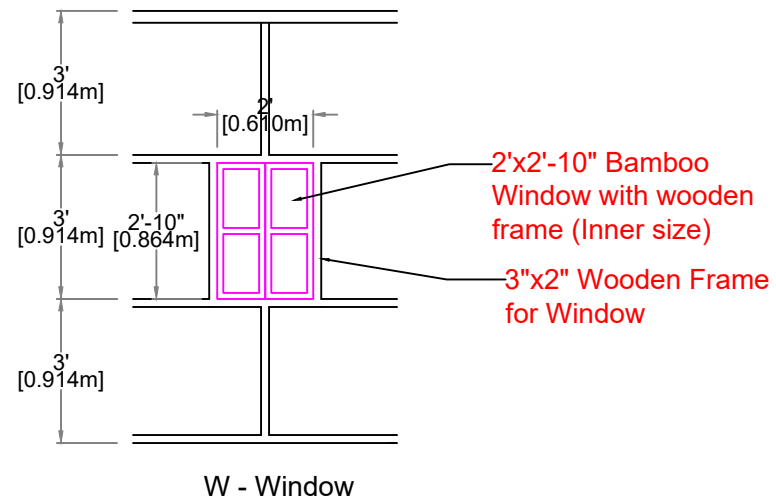
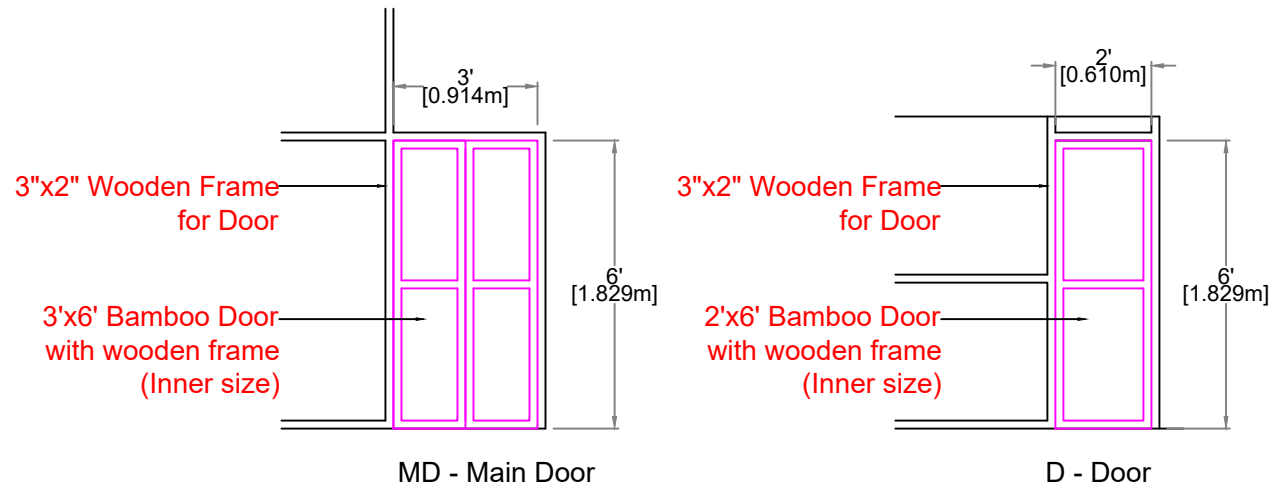
Date: 13-Aug-2025





**MYANMAR
SHELTER CLUSTER**
Coordinating Humanitarian Shelter and Settlements



CCCM CLUSTER
Myanmar



Door & Window Details

Transitional Shelter Design_ Inle lake area		
Dwg No. 15	Scale: $\frac{1}{4}" = 1'-0"$	Date: 13-Aug-2025
 MYANMAR SHELTER CLUSTER Coordinating Humanitarian Shelter and Settlements		 CCCM CLUSTER Myanmar